

## Warm Tips

Dental professionals recommend that first-time users use the soft mode for one week, and then use the normal mode after adaptation.

To use it by pressing the switch button. Pay attention to the following points:

- The flow is perpendicular to the teeth or gums.
- Move slowly along the teeth and clean them in order.
- The nozzle is aligned vertically.
- Clean the teeth, brackets, crowns and dentures thoroughly.

For the first time, do not spray water directly along the periodontal pocket.

Long-term use to avoid gum discomfort.



✓ Correct demonstration



✗ Wrong demonstration

### Wrong demonstration

Put the nozzle into the mouth before turning on the switch, so that the water will not splash everywhere. In use, the gears gradually increase from weak to strong. Give the gums a phase of adaptation to find the right gear that can withstand it.

## Routine Maintenance

- If need to clean this product, please wipe it with water or wet cloth, and then wipe the water stains on the surface with dry cloth or other dry paper towel.
- Do not immerse the product in water.
- Do not wash the product with hot water over 50°C.
- Do not bend, stretch or twist the nozzle water pipe.
- It is recommended to replace the nozzle every three months.
- If you don't use this product for a long time, empty the water in the water tank and place it in a cool and dry place.

## Fault Diagnosis

Common problems	Possible causes	Solutions
Unable to work or power on	Newly purchased or not used for more than three months	Please charge for more than 4 hours before use
The water pressure is very low at work	There is something blocked in the nozzle or the nozzle is deformed	Change the nozzle
It can only be used for a short time when charging	Insufficient charging time	Please charge for more than 4 hours before use
When charging, the charging indicator doesn't light up or jumps disorderly	The power supply is not connected properly	Please connect the power correctly
	Adapter (charging head) mismatch	Replace the adapter or plug in the USB socket directly
	The product circuit is faulty	Please contact customer service
Do not spray water when working	Newly purchased or unused for a period of time	Pull out the nozzle hole on the head washing theme. Suck hard at the nozzle

## Product Function

- Strong pulse water can clean up bacteria, dental stains, tartar and food residues in all parts of the mouth.
- Superfine water flow can clean gingival groove and deep crevices barrier free, and improve gingival health.
- Effectively remove most of the stubborn dental plaque on the surface of teeth, and the effect is far better than traditional dental floss.
- Fast oral cleaning whether it is at home or eating out, it is the most effective way to quickly restore a clean mouth.
- For orthodontic teeth, dental implants, tooth veneer cleaning has a good effect.
- Help to develop a healthy habit of daily interdental cleaning, so that the teeth always keep clean.

## Applicable People

- Severely troubled tone
- Bleeding gums
- Wear orthodontic appliances
- Oral diseases such as tooth decay, gingivitis, periodontitis, etc
- There are dental implants and dentures in the mouth
- Cleaning is needed after oral surgery to prevent infection

## Points for Attention

### ⚠ Danger

- Please read this manual carefully before use to avoid injury or damage caused by improper operation.
- Do not disassemble the product without permission to avoid product damage or electric shock.
- Do not use water above 40°C to flush teeth in the water tank to avoid scalding.
- If the product accidentally falls into the water when charging, please pull out the power plug first and then take out the product, and then charge it after the water stains are completely dry.
- If the power cord or plug is damaged, please replace the power adapter.
- Avoid placing the product at high temperature. Do not put the product into fire.

## Environmental Tips

### ♻ Environmental protection use period

The mark on the product body indicates that the environmental protection use period is 10 years. The environmental protection use period of electrical and electronic products means that the toxic and hazardous substances or elements contained in electrical and electronic products will not leak to the outside or suddenly mutate, and users of electrical and electronic products will not be exposed to the environment when using the electrical and electronic products. The time limit for causing serious pollution or causing serious damage to the human body or property. During the environmental protection period, please use this product in accordance with the instruction manual. The "Regulations on the Recycling and Disposal of Waste Electrical and Electronic Products" is a reminder that in order to better care and protect the earth, when users no longer need this product or the product's life ends, please abide by the relevant national laws and regulations on the recycling and disposal of waste electrical and electronic products. Hand it over to a local manufacturer with nationally recognized recycling and processing qualifications for recycling.

### Disposal of rechargeable battery

- The built-in rechargeable lithium battery of this product contains substances that may pollute the environment. When discarding this product, please do not put it together with general household garbage, but take out the battery.
  - When decomposing the product, be sure to turn off the power or cut off the power before taking out the lithium battery.
  - To remove the lithium battery, pry the buckle of the product cover, open the product cover, and then remove the lithium battery.
  - The removed lithium batteries should be disposed of safely and put into the battery recycling center, which is conducive to environmental protection.
- Special tips: take out the battery only when discarding the product. Please make sure that the battery is exhausted before taking it out. Non-professionals should not remove it.

## Recycle

When disposing of recycled products, please don't throw them together with general household garbage, but take them to the designated recycling center. Everyone is responsible for protecting the environment!

### ⚠ Attention

- Do not use the product for other purposes except for oral cleaning.
- Do not press the gums or teeth hard with the nozzle to avoid damaging the gums.
- Do not immerse the product in water to avoid product failure.
- Do not use the product in a high temperature and humid environment.
- Do not continue to use the power cord when the power cord is damaged.

### ⚠ Attention

- Do not use this product without the installation of nozzle.
- Some functional mouthwashes may be corrosive. Please confirm the composition of mouthwashes before using. Do not use them indiscriminately.
- If children, elderly people or operators want to use this product, please ensure that someone is supervising and instructing the user.
- Please put it out of the reach of children and infants, and do not use it as a toy.
- Patients with periodontal disease or those who have had oral surgery in the past 2 months or suffered from oral problems, please consult the doctor first and use it after confirmation.

### ⚠ Attention

- Do not use strong gear to continuously wash damaged gums or bleeding teeth to prevent inflammation.
- Please adjust the flushing intensity of the pulse water flow in real time according to your own oral situation.

### ⚠ Attention

- Do not soak the whole machine in water, it may cause product failure or complete damage.
- If you do not use this product for a long time, please make sure that the water tank is dry and free of water, and then store it to prevent the breeding of bacteria.

## Product Parameters

Product model: HX-902

Product net weight: 249g

Water tank volume: 230ml

Charging voltage: 5V

Charging current: 1A

Rated voltage: 3.7V

Rated power: 3.5W

## Quality Assurance

We guarantee our high quality, reliable performance, safety and practicality. In order to solve the customer's worries, the company uses this card to fulfill the quality responsibility and after-sales service.

- If the main components of this product are used normally within three months, if there is a fault, repair and replace the components free of charge.
  - When carrying out repairs, you should bring the receipt and warranty card to determine the warranty period.
  - The product warranty period of three months.
- Notice
- Abnormal use and human damage are not covered by the warranty.
  - If the customer disassembles the machine, the warranty will be disqualified.

Purchase date \_\_\_\_\_

Place of Purchase \_\_\_\_\_

## Certificate of Quality

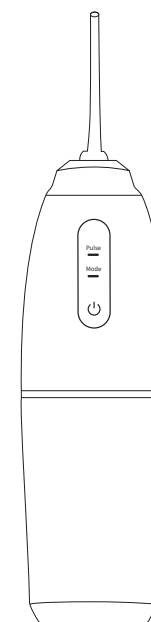
Inspection result \_\_\_\_\_ Qualified \_\_\_\_\_

Inspectors \_\_\_\_\_

Inspection date \_\_\_\_\_



# Portable Electric Oral Irrigator

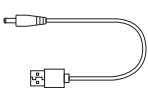
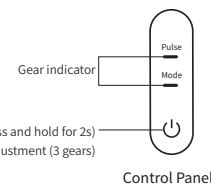
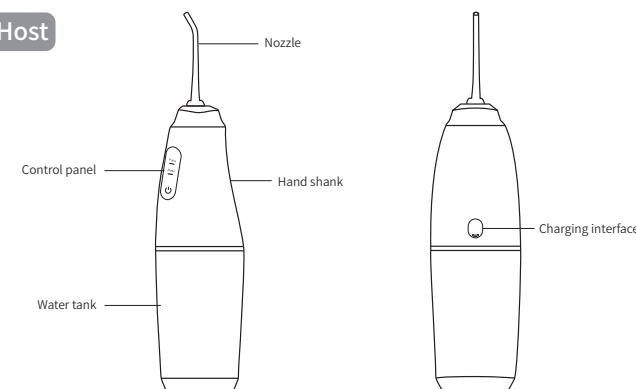


## User Manual

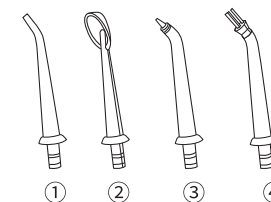
Disclaimer: Due to the iteration of product appearance, if there is any difference between the pattern on this manual and the actual product appearance, please refer to the actual product.

## Product Structure

### Host



Charging Cable



① Standard nozzle  
Suitable for daily cleaning

③ Periodontal pocket nozzle  
Special for periodontal bag cleaning

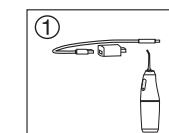
② Tongue scraping nozzle  
Dedicated for cleaning tongue coating

④ Orthodontic nozzle  
Suitable for braces cleaning

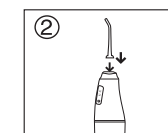
## Method of Operation

- Press and hold the key for 2 seconds to turn on the machine (turn off the machine in 2 minutes timer)
- After power on, short press to switch mode, a total of 3 modes (soft mode, normal mode, pulse mode)
- Under working conditions, long press the key for 2 seconds to turn off.
- When charging, the green light is always on; When fully charged, the green light goes out.

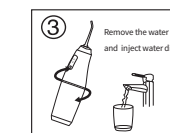
## Steps for Usage



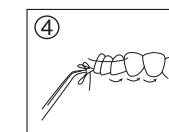
Please fully charge the device before using it for the first time.



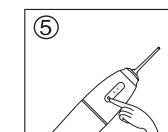
Insert the corresponding nozzle into the handle to ensure it is firm and avoid water leakage during use.



Rotate the water tank from the fuselage, remove the water tank and inject water directly.



Put the nozzle into the mouth and align it with the position to be washed.



Press and hold the key for 2 seconds to turn on.



After use, open the back cover to remove the residual water.

### • Correct method of cleaning teeth

Choose the gear that suits you. It is recommended to start with the lowest gear and gradually find the gear that suits you best. When cleaning the teeth, extend the nozzle into the mouth, aiming at the gap between the teeth or gums, and at the same time open the mouth slightly, so that the water flow can flow out smoothly when flushing the teeth. After choosing the gear that suits you, align the gums and rinse them in the same direction from the innermost side (such as 1 or 4), until the gums of the last tooth are rinsed, and then turn the nozzle over, align the gums and continue to the same direction from the inside. Rinse in the direction (such as 2 or 3) until it reaches the gum of the last tooth. The flushing sequence for the other row of teeth is the same as above.

